

YORK
5-14
JULY

MARK

CELEBRATING THE MUSIC OF SPAIN

MUSIC
2002

FESTIVAL

www.yorkearlymusic.org

Box Office: (01904) 658338

YORK EARLY MUSIC (2002)

5-14 JULY

ARTISTIC ADVISERS CATHERINE BOTT, JOHN BRYAN, DAVID FALLOWS, LINDSAY KEMP, PETER SEMOUR

FRIDAY 5 JULY

7.40 pm, Church of St. Mary, York Minster
 Tickets £10.00 / £5.00

HESPÉRION XXI

Montserrat Figueras soprano

Jordi Savall vielle, bass viol, director

Rolf Lislevand vihuela, guitar, theorbo

Arianna Savall harps

Pedro Estevan percussion

DARKNESS AND LIGHT

For the opening concert of the Festival, we are delighted to welcome some of Spain's finest early music specialists, who are making their first visit to York. Within the impressive setting of the historic quire of York Minster, this world-acclaimed ensemble introduces this year's Spanish theme with a wide-ranging programme that takes us from the medieval melting pot of Jewish, Arabic and Christian cultures to the dominance of Hispanic ideas in the New World in the 17th century.



'As always, Figueras was compelling, for her command of the music and text as well as the myriad colors and dynamic range at her disposal. Others were equally deft and informed. The capacity house listened in rapture and utter silence' *Seattle Post*

Supported by **HSBC**

Delma Tomlin

Administrative Director

Concerts in York Minster are given by kind permission of the Dean and Chapter of York

SATURDAY 6 JULY

10.00 am, 1.00 pm, 4.00 pm
 Tickets £10.00 / £5.00 / £2.00

NORTH EAST EARLY MUSIC FORUM WORKSHOP

directed by **Jeffrey Skidmore**

NEW WORLD SYMPHONIES:

An A to Z of South American baroque music

Take a voyage of discovery to uncover the hidden treasures of 17th-century Latin America, where European, African and South American cultures combined to create a colourful fusion of musical styles. Repertoire for the day will also include works by more familiar composers, such as Lobo and Victoria, and will provide opportunities for singers (all voices) and players of early strings, wind, brass and plucked and keyboard continuo. The workshop will conclude at 4.15 pm with an informal performance of works studied by the participants during the day, to which Festival-goers are cordially invited (admission free).

For booking forms and further details of repertoire, fees etc., please send an SAE marked 'York Early Music Festival Workshop' to the Events Coordinator, NEEMF, 43 Becketts Park Crescent, Leeds LS6 3PH. Applications must be received before 1 July 2002.

SATURDAY 6 JULY

10.30 am Seder Hall, Baders

£10.00 including coffee, tea and biscuits on arrival

THE A CAPPELLA HERESY: INSTRUMENTS IN RENAISSANCE SACRED MUSIC

16th-century sacred music has long been the exclusive domain of vocal ensembles, yet research has shown that this performance practice is only one side of the coin, since many of the larger cathedrals and royal chapels in Europe also maintained a wind band that accompanied the singers. *Richard Cheetham* here explains the reasoning behind his work with the Orchestra of the Renaissance (who perform at 7.30 pm, Saturday 6 July).

7.30 pm St Mary's Church, Sturminster Newton

£10.00 including coffee

ROLF LISLEVAND BAROQUE GUITAR, THE ORIBO MEDITERRANEAN MUSES

A programme of 17th and 18th-century solo music by one of the foremost performers of today, featuring works by Gaspar Sanz, Santiago de Murcia and Hieronymus Kapsberger.

'Rolf Lislevand is a rare musician, happy to break out of the baroque niche to create sounds more like world music ... this is one of the most successful recordings that I know' *Goldberg*

4.00 pm St Mary's Church, Sturminster

£10.00 including coffee

TINTAGEL

Rebecca Austen-Brown fiddle, flute
Sophie Brumfitt voice, percussion
Arngair Hauksson oud, gittern, lute, symphony

Corrina Silvester percussion

THE LAND OF CASTLES

Castile, the 'land of the castles' was a thriving Christian kingdom in the 11th to 14th centuries, defending itself against threatening Moors and other invaders. This programme presents an eclectic mix of music from the defeated and victorious: the Christian pilgrim songs, Sephardic Jewish and Arabic songs of love and suffering, and the Spanish equivalent of French troubadour poetry.

'What shines forth ... is the sense of freshness and commitment that these young musicians bring to this repertoire' *Lute News*

Sponsored by Adrian Bailey Classics of Leeds



All Saints' Church, North Street

SATURDAY 6 JULY

7.30 pm St Michael in Boreby Church,

North Streetgate

£10.00 including reserved seating and refreshments

FRIENDS' SUPPER

The Friends of York Early Music Festival are dedicated to supporting the annual Festival and its related activities. As a Friend you receive advance information about next year's Festival; priority booking; a special price for the Friends' Saver Ticket; reserved seating as far as is practicable at nearly all our venues; free programme of events during the Festival; and an invitation to the Friends' supper party during the Festival. If you would like more information on how to join the Friends – and help keep this valuable Festival alive – please ring Ann Longmuir on 01904 658338.

ORCHESTRA OF THE RENAISSANCE

directed by Richard Cheetham

THE MARRIAGE OF ENGLAND AND SPAIN
In 1544 the kingdoms of England and Spain were united by a magnificent marriage ceremony celebrated in Winchester Cathedral, with music provided by the Royal Chapels of each country. The centrepiece of this reconstruction of the Wedding Mass of Mary Tudor and Philip II is John Tavener's *Missa Gloria tibi Trinitas*, which is performed using the colourful instrumental accompaniment that such an important ceremony may have demanded. It is set alongside motets and instrumental music from the leading composers of the time, including Gombert, Morales and Sermisy.

'The Orchestra of the Renaissance ... turned this normally reverential music into a devastating avowal of passion. A group to watch' *The Times*

During the festival, why not enjoy lunch at one of the many restaurants situated just yards from the National Centre for Early Music? **The Blue Bicycle** (01904 673990) and **Melton's too** (01904 629222) are both popular choices, renowned for their ambience and exceptional food.

10.00 pm National Centre for Early Music, St Mary's Church, Walmington

FRIENDS' SUPPER

The Friends of York Early Music Festival are dedicated to supporting the annual Festival and its related activities. As a Friend you receive advance information about next year's Festival; priority booking; a special price for the Friends' Saver Ticket; reserved seating as far as is practicable at nearly all our venues; free programme of events during the Festival; and an invitation to the Friends' supper party during the Festival. If you would like more information on how to join the Friends – and help keep this valuable Festival alive – please ring Ann Longmuir on 01904 658338.

SUNDAY 7 JULY

10.00 am St Mary's Church, Walmington

£10.00 including coffee

FRIENDS' SUPPER

HANDS ON: SPANISH MUSIC AND DANCE

An opportunity to play and sing music from Spain, using instruments at the National Centre for Early Music: join **John Bryan** (Artistic Adviser to the Festival) and **Cathryn Dew** (Education Manager for York Early Music Foundation) for an exploration of medieval and renaissance music and dance in a relaxed and informal atmosphere. This workshop is suitable for everyone, from complete beginners to more experienced singers and instrumentalists. All ages are welcome, but children under 12 must be accompanied by an adult.

YORK MYSTERY PLAYS 2002

SUNDAY 7 JULY

Following the success of the Mystery Plays productions on wagons in 1994 and 1998, York Early Music Festival is delighted to support the 2002 production, which is initiated by the historic Guilds of York and directed for the first time by Mike Tyler.

The cycle will consist of ten different Plays presenting the dramatic story of God's creation of the world; the birth, death and resurrection of Christ; and ending with the drama of the Last Judgement. The Plays will be performed consecutively at five 'stations' in the city: Dean's Park, the South Transept outside York Minster, College Green, King's Square and Yorkshire Museum Gardens.

The Plays will be performed on both Sunday 7 July and Sunday 14 July and will be presented in the following order:

- 1 The Plasterers' Play
CREATION TO DAY FIVE
brought forth by the Guild of Building and York College, sponsored by the Guild of Building.
- 2 The Fishers and Mariners' Play
NOAH AND THE FLOOD
brought forth by St Luke's Church.
- 3 The Hoovers' Play
MOSES AND PHARAOH
brought forth by All Saints' School, sponsored by the Merchant Taylors.
- 4 The Chandlers' Play
ANGELS AND SHEPHERDS
brought forth by the Lords of Misrule.
- 5 The Barbers' Play
BAPTISM OF CHRIST
brought forth by Heslington Church.
- 6 The Capmakers' Play
WOMAN TAKEN IN ADULTERY/RAISING OF LAZARUS
brought forth by the Guild of Cordwainers, sponsored by the Guild of Cordwainers.
- 7 The Gathers' Play
CONSPIRACY AGAINST JESUS
brought forth by the Guild of Freemen with York Shakespeare project, sponsored by the Guild of Freemen.
- 8 The Butchers' Play
DEATH OF CHRIST
brought forth by the Friends of York Mystery Plays, sponsored by the Butchers' Guild.
- 9 The Scriveners' Play
INGREDIENCY OF THOMAS
brought forth by the Guild of Scriveners, sponsored by the Guild of Scriveners.
- 10 The Mercers' Play
THE LAST JUDGEMENT
brought forth by the Settlement Players, sponsored by the Merchant Adventurers.



Play 1 will begin in Dean's Park at 12 noon and Play 10 will be performed for the fifth and final time in Yorkshire Museum Gardens at about 6.30 pm. Access to the Plays is free, although there are two covered seating stands available – one in Dean's Park and the second in Yorkshire Museum Gardens. Why not buy a ticket to sit and listen to some of the Plays in comfort and then join the crowds and enjoy the remainder of the Cycle as you walk through the streets of York?

Tickets are available as detailed opposite, but please do book early since the seating capacity is very limited.

12.00 - 1.50 pm Dean's Park

EXHAUSTED £7.00

Plays 1 - 5

2.00 - 4.00 pm Dean's Park

EXHAUSTED £7.00

Plays 6 - 10

2.45 - 4.40 pm Yorkshire Museum Gardens

EXHAUSTED £7.00

Plays 1 - 5

4.50 - 6.50 pm Yorkshire Museum Gardens

EXHAUSTED £7.00

Plays 6 - 10

For further details and updated timings, please look out for local publicity on the day.

SUNDAY 7 JULY

3.00 pm, Ursula's Chapel, St Salvator's College
Tel: 01904 770 00 (x400)

ANDREW LAWRENCE-KING SPANISH BAROQUE HARP

THE HARP OF LUDUVICO: Fantasias and tientos, fandangos and chaconas

Virtuoso harpist Andrew Lawrence-King provides a fascinating snapshot of Spanish musical life, with all its cosmopolitan variety and stylistic diversity. The first half of the concert features renaissance intabulations from Spain, Italy and France, with 16th-century polyphonic pieces by Cabezón, Milan, Mudarra and Narváez, which are contrasted in the second half by baroque dances from Spain, Italy, South America and Africa, with variations by the 17th-century composers Cabanilles, Campra, Murcia and Sanz.

'A great virtuoso, musician and poet'
Boston Globe

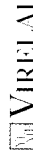


St Mary's Church, Bishophill

MONDAY 8 JULY

10.00 pm, National Centre for Early Music,
St Margaret's Church, Wapping
Concert by candlelight
Tel: 020 770 00 1000

VIRELAI

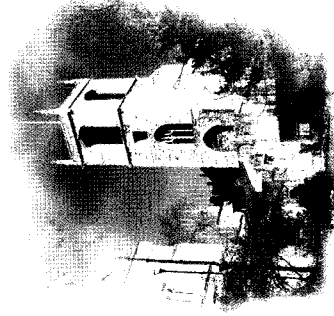


Catherine King soprano
William Lyons flute, recorder
Jacob Heringman vihuela, guitar
Susanna Peil viol

CANCIONERO DE UPPSALA: A Spanish renaissance songbook

Published in 1556, this songbook contains some of the finest Spanish songs of the time, reflecting some of the crucial changes to vocal writing in Europe in the mid-16th-century, particularly the influence of the Italian madrigal. With its unique and flexible combination of solo voice and vihuela/lute, flute and viols, Virelai performs a variety of songs from this source, alongside virtuosic and lively dances taken from other contemporary publications.

'Catherine King's pure voice and sympathetic feeling for the melodic curves of this music bring it all to life, as do the instrumentalists of the group Virelai ... strongly recommended' *Classic CD*



St Olaves Church, Marygate

10.30 am, House of Legends,
St Edmund's College
Tel: 01223 770 000 (including international and overseas callers)

REDISCOVERING THE PORTUGUESE MUSICAL RENAISSANCE

An introduction to Portuguese 16th and 17th-century sacred music: the major centres, the sources, the composers, and musical relationship with Spain and other parts of Europe. This talk by **Owen Rees**, director of the Cambridge Taverner Choir, will be illustrated from his experiences of performing and recording this relatively little-known but fascinating repertory.

1.00 pm, St Salvator's College, Bishophill
Tel: 01904 770 00 (x400)

SARA STOWE, VOICE MATTHEW SPRINGLUTE, VIHUELA, GUITAR

THE MOORS IN SPAIN

This programme explores the influence on early Spanish song of the long-established Moorish culture in Spain. Replacing the troubador tradition, the new forms of the 15th and 16th century represent one of the major peaks in Spanish song writing, which developed out of the interchange between the Christian and Moorish communities. This programme is drawn from the major Cancioneros or songbooks of the time, with settings that draw on centuries-old poems to create songs of tremendous emotional intensity.

'A delicious dexterity and exquisite emotion, in performances rich with insight and intelligence, shot through with an altogether beguiling emotional blend of the brittle and the bold' *What's On*

7.00 pm, St Jack Lyons Concert Hall,
University of York
Tel: 01904 770 00 (x1501)
University of York students free

CAMBRIDGE TAVERNER CHOR

directed by Owen Rees

MUSIC FROM THE COURTS OF THE SPANISH CATHOLIC MONARCHS

A programme of some of the most powerfully expressive music of the late 15th and early 16th centuries, by Spanish and Portuguese composers in the service of the Catholic monarchs Ferdinand and Isabella. The programme features pieces newly transcribed by Owen Rees, including Francisco de Peñalosa's *Missa Ave Maria*, as well as motets by Peñalosa, Alonso de Alba, Pedro de Escobar and Antonio de Ribera.

'The listener can feel how the performers are themselves moved by the beauty of the marvellous music they are making'
Gramophone

York Early Music Festival gratefully acknowledges the long-term support of Yorkshire Arts, the Mayfield Valley Arts Trust, the City of York Council and the York Early Music Foundation.

MONDAY 8 JULY

7.30 pm National Centre for Early Music,
St Margaret's Church, Waltham
Concert by candlelight
7.30 pm to 11.00 pm

THE ENGLISH SPANISH GIRL

Young people from Heworth CE Primary School perform a dramatised version of a story by Cervantes, with the help of actor **Mark Payton**, musicians **Concanentes** and **Cathryn Dew**. During the time of Queen Elizabeth, a young girl is kidnapped from her home in Spain and smuggled to England. What adventures will befall her?



7.30 pm to 11.00 pm
National Centre for Early Music,
St Margaret's Church, Waltham
Concert by candlelight
7.30 pm to 11.00 pm

INSIDE TREASURER'S HOUSE

A rare opportunity to enjoy a private view of one of York's finest houses in the company of custodian **Jane Whitehead**, and also hear from **Angus Smith** of The Orlando Consort, who will introduce the concert that follows in the Chapter House. Managed by the National Trust, the elegant Treasurer's House takes its name from the medieval house of the Minster Treasurer. Undergoing major reconstruction in the 17th century, it later suffered from years of neglect but was rescued at the end of the 19th century by the wealthy local industrialist, Frank Green, who painstakingly restored it and made it his home. It is now as he left it, with many fine pieces of furniture and notable collections of china, pottery and glass.

TUESDAY 9 JULY

10.30 am National Centre for Early Music,
St Margaret's Church, Waltham
Concert by candlelight
10.30 am to 12.00 pm

MEDEVAL MUSICAL STYLES IN SPAIN

An illustrated lecture by the acclaimed musician and historian **Joel Cohen**, whose work on Jewish, Christian and Muslim musical traditions was awarded the Edison Prize in 2000.

10.30 am to 12.00 pm
National Centre for Early Music,
St Margaret's Church, Waltham
Concert by candlelight
10.30 am to 12.00 pm

CONCANENTES

Faye Newton soprano
Hazel Brooks vielle
Cathering Fleming recorder
Arngier Hauksson gittern, oud
Corrina Silvester percussion
MUSIC FOR FERDINAND AND ISABELLA
The reign of Ferdinand and Isabella (1469–1516) saw a great flourishing of the arts, encouraged by the direct patronage of the Catholic monarchs. This programme draws on the *Cancionero Musical de Palacio*, the largest collection of music from Spain at this time, presenting a variety of songs – about love, wars and politics – that are characterised by simple folk-like melodies but have a courtly elegance. In today's programme the music is interspersed with readings from *El Cortesano* by Luis de Milan – a fascinating contemporary account of daily life at the Spanish court.

7.30 pm National Centre for Early Music,
St Margaret's Church, Waltham
Concert by candlelight
7.30 pm to 11.00 pm

'Excellent singing and instrumental playing'
Early Music Review

7.30 pm National Centre for Early Music,
St Margaret's Church, Waltham
Concert by candlelight
7.30 pm to 11.00 pm

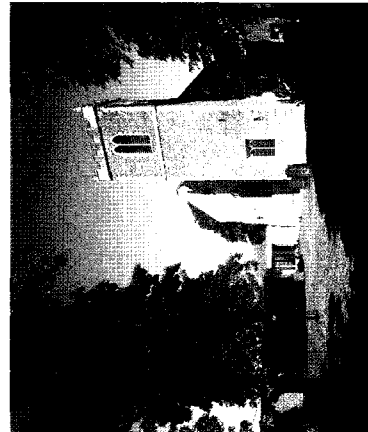
LA COLOMBINA

María Cristina Kiehr soprano
Claudio Cavina alto
Josep Benet tenor
Josep Cabré baritone

CANCIONERO DE LA SABLONARA:

Music and poetry from Hapsburg Spain
Four of the world's most exciting early music vocal soloists join in consort to present secular music from the early Spanish baroque, including romances and songs from court entertainments by the leading Spanish composers of the time: Mateo Romero, Gabriel Díaz and Juan Blas de Castro.

'Four superb voices ... created with the purity of their sounds a sense of heartrending beauty'
Repertoire



National Centre for Early Music

7.30 pm National Centre for Early Music,
St Margaret's Church, Waltham
Concert by candlelight
7.30 pm to 11.00 pm

THE ORLANDO CONSORT

Richard Harre-Jones countertenor
Charles Daniels, Angus Smith tenors
Donald Greig baritone
THE TOLEDO SUMMIT
In 1502 Archduke Philip the Fair, founder of the mighty Habsburg Dynasty, travelled from the Netherlands to Toledo in Spain, where he met the Spanish Catholic monarchs in an epic political encounter. Philip brought with him his famous retinue of musicians and this programme recreates some of the remarkable musical performances that were heard at the gathering, featuring composers from two of Europe's most important musical nations – Penalosa, Anchieta and Escobar from the Spanish side and La Rue, Agricola and Josquin Desprez from the Low Countries.

'The Orlando Consort's performances are staggeringly beautiful'
The Sunday Times



Treasurer's House

7.30 pm National Centre for Early Music,
St Margaret's Church, Waltham
Concert by candlelight
7.30 pm to 11.00 pm

THE ENGLISH SPANISH GIRL

Young people from Heworth CE Primary School perform a dramatised version of a story by Cervantes, with the help of actor **Mark Payton**, musicians **Concanentes** and **Cathryn Dew**. During the time of Queen Elizabeth, a young girl is kidnapped from her home in Spain and smuggled to England. What adventures will befall her?



7.30 pm to 11.00 pm
National Centre for Early Music,
St Margaret's Church, Waltham
Concert by candlelight
7.30 pm to 11.00 pm

INSIDE TREASURER'S HOUSE

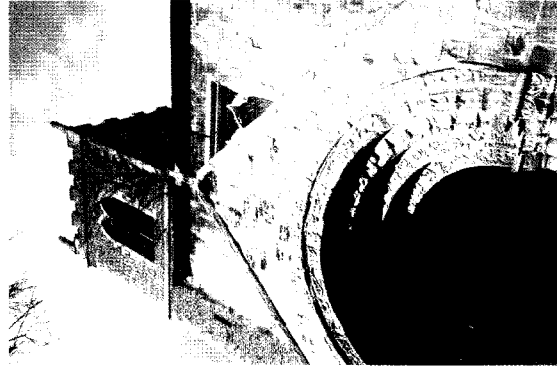
A rare opportunity to enjoy a private view of one of York's finest houses in the company of custodian **Jane Whitehead**, and also hear from **Angus Smith** of The Orlando Consort, who will introduce the concert that follows in the Chapter House. Managed by the National Trust, the elegant Treasurer's House takes its name from the medieval house of the Minster Treasurer. Undergoing major reconstruction in the 17th century, it later suffered from years of neglect but was rescued at the end of the 19th century by the wealthy local industrialist, Frank Green, who painstakingly restored it and made it his home. It is now as he left it, with many fine pieces of furniture and notable collections of china, pottery and glass.

WEDNESDAY 10 JULY

10.30 am Bedern Hall, Bedern
Adults £7.00 (including coffee/tea and biscuits on arrival)

MUSIC AND MATHEM AT THE HOUSE OF THE SEVEN CHIMNEYS: THE ENGLISH MADRID EMBASSY IN THE 17TH CENTURY

In preparation for the concert by Robin Blaze and Elizabeth Kenny at 1.00 pm, **Robert Stradling**, Emeritus Professor of History at the University of Wales, provides an introduction to the role of music in Spain in the 17th century and in particular the heady mix of music, politics and culture at the English Embassy in Madrid.



St Margaret's Church, Walmgate

1.00 pm National Centre for Early Music,
 St Margaret's Church, Walmgate
Adults £10.00 (£8.00)

ROBIN BLAZE COUNTERTENOR ELIZABETH KENNY GUITAR SANDWICH SELECTION: AN AMBASSADOR'S TASTE IN MUSIC

The enormously popular theatrical performances in late-17th-century England and Spain were interwoven with songs and musical interludes. It was at this time that the great Spanish guitarist Gaspar Sanz taught the Earl of Sandwich when he was Ambassador to Madrid. Thanks to the Ambassador's musical tastes, a large collection of theatrical songs by José Marin made the long journey from Madrid to the Fitzwilliam Museum in Cambridge. This programme draws on those manuscripts, as well as works by Marin's contemporaries, all featuring the ever-popular combination of the time of solo voice and guitar or theorbo.

'Blaze and his fine accompanist Elizabeth Kenny ... another fine achievement from two of Britain's brightest and best'
Gramophone

The Festival is delighted to acknowledge the support of a number of organisations who this year include BBC Radio 3, the Friends of York Early Music Festival, HSBC, Nestlé UK plc, Adrian Bailey Classics of Leeds, Harrowell Shaftoe Solicitors, Shepherd Building Group, GNER, Portakabin, House of Townend Wines and Sixt Kenning.

THURSDAY 11 JULY

10.30 am Bedern Hall, Bedern
Adults £7.00 (including coffee/tea and biscuits on arrival)

MEDIEVAL SPAIN

The medieval experience of the Iberian Peninsula was unique in Western Europe. Early in the eighth century it was overrun by Islamic armies from North Africa; this Islamic presence was to have an enduring effect – both as a significant political presence for the next five centuries and as a force that shaped cultural life for a great deal longer. This lecture by **Professor Richard Fletcher** (formerly of the University of York) will explore some aspects of this remarkable medieval experiment in multiculturalism, which is essential for the appreciation of the cultural flowering of the Spanish Golden Age that followed.

1.00 pm National Centre for Early Music,
 St Margaret's Church, Walmgate
Adults £10.00 (£8.00)

GARY COOPER HARPSICORD

A recital of some of Domenico Scarlatti's original and colourful sonatas taken from the *Venice Codex* – the most complete source of his works and the property of the Queen of Spain (it has the Spanish and Portuguese coats of arms stamped on the cover). Scarlatti's sonatas often push the bounds of what was acceptable in the pre-classical sonata: full of incredible rhythmic diversity, harmonic invention and often ground-breaking virtuosity, the sonatas continue to challenge the listener, just as they did in the 18th century.

'A rising star in early music' *The Observer*

1.00 pm St Oliver's Church, Starygate
Adults £15.00 (£12.50)

ANNE AZÉMA SOPRANO JOEL COHEN LUTE HAZEL BROOKS VIELLE LA ROSA ENFLORESCENCE: SPAIN OF THE THREE RELIGIONS

Anne Azéma and Joel Cohen – whose performances enthralled Festival audiences in 1999 – make a return visit with a programme that explores the rich confluence of Jewish, Christian and Muslim musical styles in medieval Spain. Based on Joel Cohen's extensive research in Europe and Morocco, it includes Cantigas, Arabo-Andalusian songs and Sephardic works.

'Just about took one's breath away'
The Boston Globe

1.00 pm National Centre for Early Music,
 St Margaret's Church, Walmgate
Adults £10.00 (£8.00)

JAMES BOWMAN COUNTERTENOR PETER SEYMOUR HARPSICORD OF FALSETTISTS AND CASTRATI: QUEENS AT THE ESCORIAL

The acclaimed 18th-century castrato Farinelli was 'stolen' from England and required to sing operatic and oratorio arias for the ailing Philip V. The quality of his singing is reported to have cured the King. Along with contemporary diary extracts, this programme presents some of the arias Farinelli is said to have performed and includes music by Handel, Hasse, Jommelli and Conforto.

THURSDAY 11 JULY

7.30 pm St Olave's Church, Markyate
Tel: 01923 451509 • £12.50

THE DUFAY COLLECTIVE

Vivien Ellis voice
Paul Bevan trumpet, psaltery, percussion
Giles Lewin vielle, rabab, oud
Williams Lyons flute, shawm, simfony
Susanna Pell vielles, rabab
Peter Skuce harp, rabab, percussion

MIRACLES: MUSIC FOR A MEDIEVAL PILGRIMAGE

From lofty king, to the lowly serf, the notion of taking a pilgrimage in the Middle Ages was immensely attractive. This concert presents music that would have been heard by pilgrims to the remarkable shrine of the Black Virgin of Montserrat, taken from two important contemporary sources: the *Cantigas de Santa Maria* and the *Llibre Vermell*. Using instruments that reflect the unique meeting of eastern and western traditions in medieval Spain, the programme displays the splendidly diverse nature of the music of the time.



'A remarkably talented ensemble who, with every recording, manage to surprise the listener with wit and imagination' *Classic CD*

FRIDAY 12 JULY

7.30 pm St Olave's Church, Markyate
Tel: 01923 451509 • £12.50

FITZWILLIAM STRING QUARTET

Lucy Russell, Jonathan Sparey violins
Alan George viola
Nicola Baxter cello
with **Elizabeth Kenny** guitar

A rare opportunity to experience classical chamber music by composers in Spain. The programme will feature Boccherini's Quartettino in B flat op. 33/4 and Guitar Quartet no. 1 in D, and a string quartet by Arriaga.

'Superb in their maturity, intensity, precision, communicativeness – a really memorable musical experience'
Stereo Review

7.30 pm York Minster
Tel: 01904 625082

YORKSHIRE BAROQUE SOLOISTS

directed by **Peter Seymour**
TOMAS LUIS DE VICTORIA:
Polychoral splendour
Victoria is arguably the greatest composer of the Spanish Golden Age. This sequence of motets and psalms presents a wide range of his choral music for several choirs of voices and instruments, from the intimate and contemplative to the colourful and spectacular.

'A splendid performance ... grace and buoyancy, rhythmic vitality, brilliant clarity'
Musical Times

SATURDAY 13 JULY

10.30 am St Olave's Church, Markyate
Tel: 01923 451509 • £12.50

EARLY MUSIC NETWORK

YOUNG ARTISTS' COMPETITION WINNERS: APOLO AND PAN

Tassilo Erhardt violin
Sally Holman dulciana
Michael Borgstede chamber organ
SERENADE ON THE GRAND CANAL
Following their debut in York last summer, this talented young group of musicians returns with a programme focusing on Venice – one of the richest centres of music-making in Europe. This programme features not only the works of Venetian composers such as Legrenzi, de Rore and Castello, but also musicians who spent a large part of their life in Venice, including the violinist Martini.

'... this most impressive group'
Early Music Review

7.30 pm York Minster
Tel: 01904 625082

CATHERINE BOTT SOPRANO

IN THE NAME OF MARIA: SONGS OF PRAISE TO THE VIRGIN FROM 13TH-CENTURY SPAIN

In the atmospheric setting of the Lady Chapel, the acclaimed soprano Catherine Bott presents songs from the famous medieval *Cantigas de Santa Maria*, love songs by Marim Codax and four *Planctus* from the Las Huelgas MS. And recreating the original spirit of the *Cantigas* – which often involved everyone by giving them the chance to sing refrains in a vernacular language – Catherine Bott will invite the audience to join in a couple of the *Cantigas*.

'Catherine Bott's beautiful, intelligent and entirely persuasive account was genuinely moving, her *mezza voce* control and wide range of vocal colour adding to the intensity of the drama' *The Independent*

HOTELS IN YORK

The Festival is delighted to recommend the following hotels in York:
Dean Court York (01904 625082)
The Grange (01904 644744)
Holiday Inn (0870 4009085)
Middlethorpe Hall (01904 641241)
Hilton (01904 648111)
Newington (01904 611570)
Le Meridien (01904 653681)
Marriott Hotel (01904 701000)
Novotel (01904 611660)
Travelodge (08700 850950) and
York Viking Moat House (01904 459988).

SATURDAY 13 JULY

7.30 pm, St Mary's Church, Bishopthorpe
 10.00 for 10.00

CLARA SANABRAS VOICE

**WILLIAM CARTER LUTE, GUITAR
 NINA Y VINA: SONGS FROM THE 16TH
 AND 17TH CENTURIES**

A colourful evocation of the Spanish Renaissance, with vihuela songs by Mudarra and Narváez, guitar music by Sanz and songs to the guitar by the 'infamous criminal and priest' José Marin.

'Clara Sanabras, with her lyrical soprano voice, conveyed such tender feelings, seemingly holding every note in her loving hands' *Wiener Journal*

7.30 pm, York Minster
 10.00 for 10.00

THE TALLIS SCHOLARS

Directed by Peter Phillips

THE GOLDEN AGE OF SPANISH POLYPHONY

In the sublime surroundings of York Minster, this performance of renaissance masterpieces by the internationally renowned Tallis Scholars makes a wonderful conclusion to the Festival's Spanish theme. The programme includes music by Guerrero (*Maria Magdalene*), Lobo (*Missa Maria Magdalene*), Victoria (*Surrexit pastor bonus, Vidi speciosam, Quem vidistis, pastores?*), Carceres (*Lamentations*), Vivanco (*Versa est in luctum*) and Lobo (*Versa est in luctum*).

'Glorious performances, never over-manicured' *The Times*

Supported by

12.00 pm, St Peter's Church, York

YORK MYSTERY PLAYS 2002

A second opportunity to see the unique cycle of York Mystery Plays on wagons in the streets of York.

Please see Sunday 7 July for details.

Tickets for the seating stands are available as follows:

12.00 1.30 pre-plays Book
 12.00

Plays 1 - 5

12.00 1.30 pre-plays Book
 12.00

Plays 6 - 10

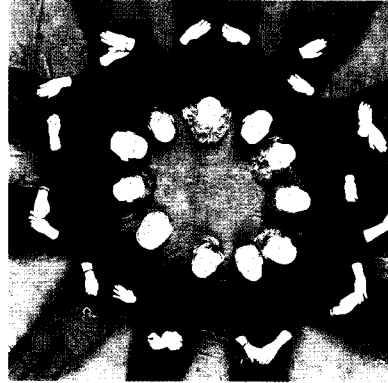
12.00 1.30 pre-plays Book
 12.00

Plays 1 - 5

12.00 1.30 pre-plays Book
 12.00

Plays 6 - 10

Please note that timings are necessarily approximate.



The Tallis Scholars

SUNDAY 14 JULY

4.00 pm & 7.30 pm
 National Centre for Early Music,
 St Margaret's Church, Walmgate

 10.00 for 10.00

FESTIVAL

To celebrate the Festival's Spanish theme, we are delighted to welcome members of Yorkshire's Making Music Societies as they combine forces with young people from York and the surrounding area to perform their own version of a Spanish *Ensalada* – presenting a vibrant mix of instrumental and vocal music from Spain and Latin America. Highlights include a new interpretation of the hauntingly beautiful 16th-century song by Juan del Encina, *Ay triste que vengo*, devised by the participants themselves, with the help of composer Chris Bartram. This project is part of Tuned In, Making Music's Young People's Programme, and is funded by the National Foundation for Youth Music and the Carnegie (UK) Trust.

Making Music tuned in

YORK EARLY MUSIC CHRISTMAS FESTIVAL

This year's Christmas Festival will run from 12 - 15 December and features a host of celebrated artists, including the internationally acclaimed soprano Emma Kirkby working with London Baroque, Gothic Voices, Sonnerie, and the European Union Baroque Orchestra directed by Fabio Biondi. The full programme will be published in September. To join our mailing list, please ring 01904 632220 or e-mail enquiry@yorkearlymusic.org

YORK EARLY MUSIC FESTIVAL BOOKING INFORMATION

Booking opens Tuesday 9 April.

Tickets for all events are available from the **Festival Box Office, The National Centre for Early Music, St Margaret's Church, Walmgate, York YO1 9TL**; telephone **01904 658338**; e-mail **boxoffice@yorkearlymusic.org**

Postal booking: Please send a sae with an open cheque made out to York Early Music Foundation or enclose details of your credit card. Please note that a charge of £1.00 will be made for credit card bookings.

Refunds: We regret that refunds can only be given if the concert is sold out. Please note that there will be a 10% administration charge.

General enquiries: Please ring **01904 632220** for general information.

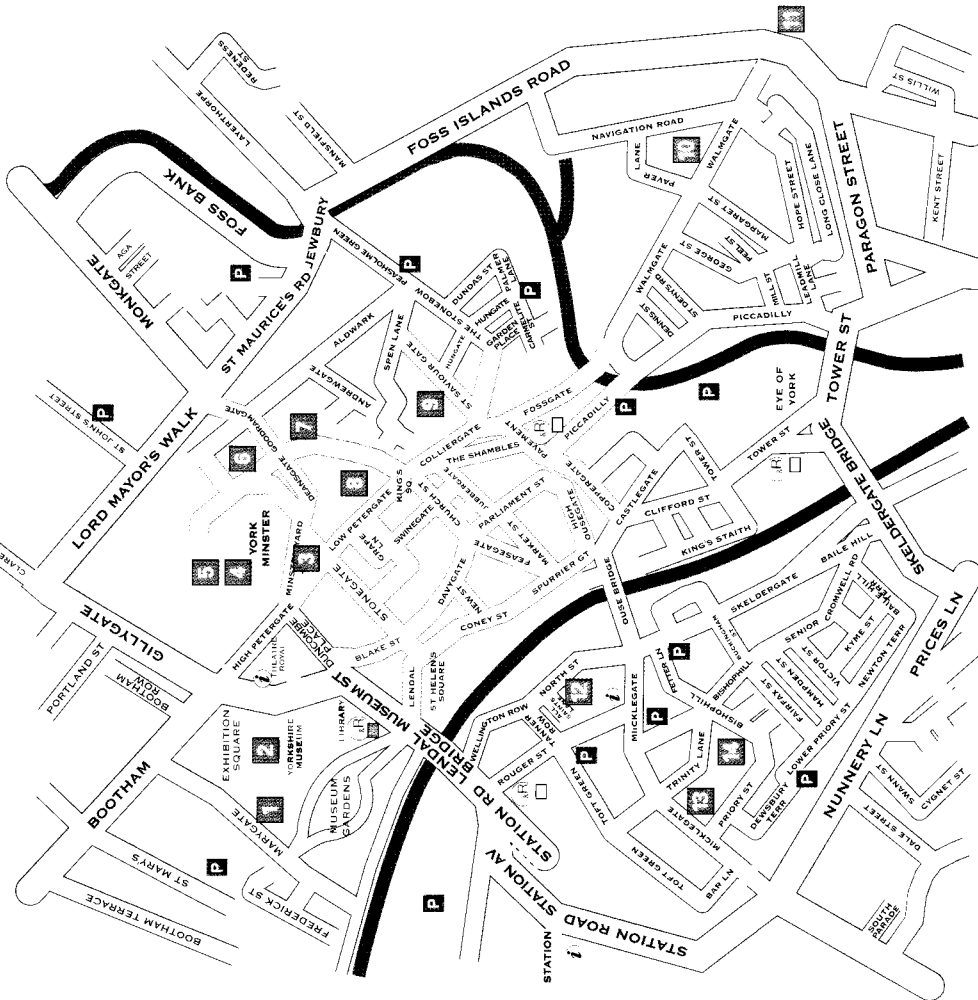
Friends of the Festival: The Friends enjoy additional discounts, priority booking, reserved tickets and good company. Please telephone **01904 658338** for details.

Party bookings: Special savings can be made for those bringing a party of 11 or more, in which case we offer an additional seat free.

Facilities for the disabled: The Festival offers a warm welcome to the disabled. For detailed information on access, parking and toilets please telephone **01904 632220**. A taped version of the Festival programme, plus information on access, is available free of charge from the Festival office.

Promoted by York Early Music Festival. Registered charity no. 509126/R

MAP OF VENUES



Venues in the centre of York are all within walking distance. The University of York can be reached by car or bus (number 4, turquoise line, departs from the railway station every 10 minutes).

- 1 St Olave's Church, Marygate
- 2 Yorkshire Museum Gardens
- 3 St Michael-le-Belfrey Church
- 4 York Minster and Treasurer's House
- 5 Dean's Park
- 6 St William's College
- 7 Bedern Hall
- 8 Holy Trinity Church, Goodramgate
- 9 Unitarian Chapel, St Saviourgate
- 10 National Centre of Early Music
- 11 To the University of York
- 12 All Saints' Church, North Street
- 13 Holy Trinity Church, Micklegate
- 14 St Mary's Church, Bishophill

BOOK

If you would like to make a postal booking, please complete this form and return with an SAE to The National Centre for Early Music, St Margaret's Church, Walmgate, York YO1 9TL. Please make your cheques out to York Early Music Festival. To book by telephone, please ring York 01904 658338. To book by e-mail, contact us at boxoffice@yorkearlymusic.org

Name _____
 Address _____
 Post code _____
 Tel no (home) _____ Tel no (work) _____

Tickets required

Friend Saver For information on Friends discounts and reserved seating please ring 01904 658338

Events _____ Date _____ Price _____ No. _____ Total _____

Sub-total

If using a credit card please add £1

I would like to make a donation of £

Total £

There are two ways to pay:

By enclosing a crossed cheque made out to the York Early Music Festival Ltd.

Please leave the cheque blank, but specify an upper limit.

By allowing us to debit your Visa/MasterCard/switch card

Cardholder's signature _____

the national centre
for early music, york

www.ncem.co.uk

YORK EARLY MUSIC FESTIVAL

5 - 14 JULY 2002



celebrating...

- 25th anniversary
- the musical traditions of Spain
- the famous cycle of Mystery Plays
- the historic city of York
- the award-winning National Centre for Early Music



The National Centre for Early Music

